



2650-1715-00

INSTALLATION INSTRUCTIONS

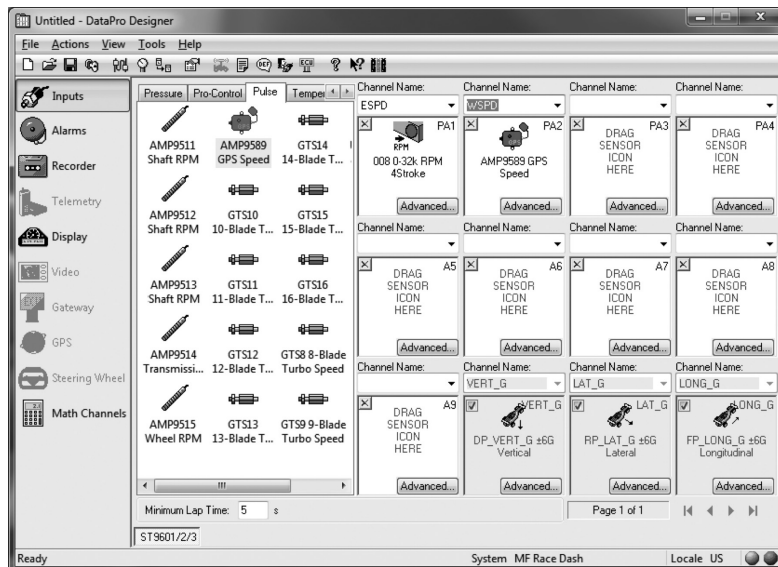
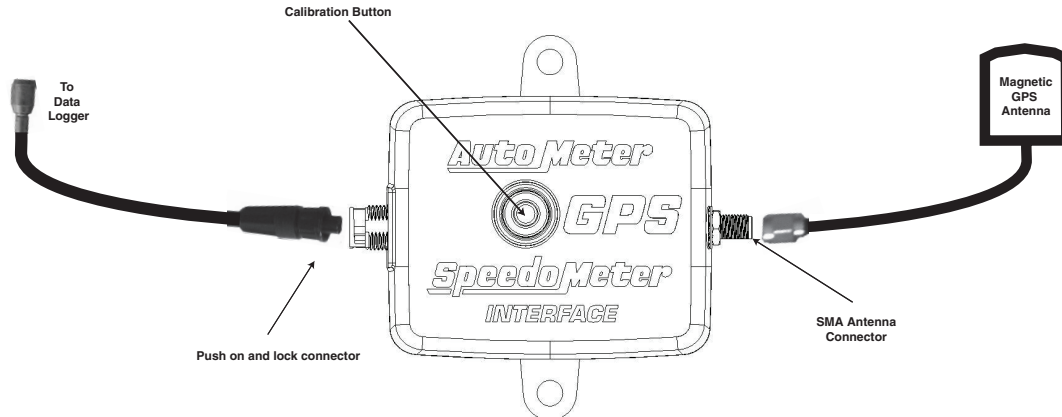
GPS SPEEDOMETER INTERFACE

MODULE FOR DRAG LOGGER



Installation

1. The interface module should be mounted away from high heat sources (like under the hood). It is highly water-resistant, though it should not be submerged.
2. Connect the GPS antenna to the interface module by screwing the SMA connector on the antenna cable (see illustration below) to the connector on the side of the module. The GPS antenna can be placed inside or outside of the vehicle as long as it has a clear view of the sky. The antenna is waterproof and can be painted if desired.
3. Connect the sure seal connector to the desired channel on the data acquisition system.
4. Calibration is not required when connecting to an Auto Meter data acquisition system.



- Open DataPro Designer.
- Chose your configuration.
- Select inputs.
- From the pulse tab drag the AMP9589 sensor to the desired channel.
- Upload configuration to data logger.

SERVICE

For service send your product to Auto Meter in a well packed shipping carton. Please include a note explaining what the problem is along with your phone number. If you are sending product back for Warranty adjustment, you must include a copy (or original) of your sales receipt from the place of purchase.

12 MONTH LIMITED WARRANTY

Auto Meter Products, Inc. warrants to the consumer that all Auto Meter High Performance products will be free from defects in material and workmanship for a period of twelve (12) months from date of the original purchase. Products that fail within this 12 month warranty period will be repaired or replaced at Auto Meter's option to the consumer, when it is determined by Auto Meter Products, Inc. that the product failed due to defects in material or workmanship. This warranty is limited to the repair or replacement of parts in the Auto Meter instruments. In no event shall this warranty exceed the original purchase price of the Auto Meter instruments nor shall Auto Meter Products, Inc. be responsible for special, incidental or consequential damages or costs incurred due to the failure of this product. Warranty claims to Auto Meter must be transportation prepaid and accompanied with dated proof of purchase. This warranty applies only to the original purchaser of product and is non-transferable. All implied warranties shall be limited in duration to the said 12 month warranty period. Breaking the instrument seal, improper use or installation, accident, water damage, abuse, unauthorized repairs or alterations voids this warranty. Auto Meter Products, Inc. disclaims any liability for consequential damages due to breach of any written or implied warranty on all products manufactured by Auto Meter.

FOR SERVICE SEND TO: AUTO METER PRODUCTS, INC. 413 W. Elm St., Sycamore, IL 60178 USA (866) 248-6357

Email us at service@autometer.com